



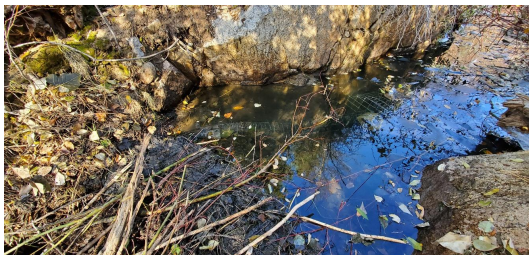
Inter-species Partnerships – Coexistence to Promote Ecological Restoration

Happy November Beaver Believers! This month's newsletter highlights a current MBP beaver coexistence project representing our expanded mission to partner with landowners and managers to resolve challenges of living with native beavers. This project brings together private landowners, the Yakama Nation, WDFW, MBP, and our Furry Friends in a very collaborative approach to coexistence and finding common ground, or maybe in this case, common waters.

The scene is set north of Winthrop, WA, on a large river bend. A gravel driveway descends a hillside and bridges a side channel onto a vast floodplain. The ground is wet underfoot, aspen shimmer in the breeze, willows sag under their rapid growth, and grand cottonwoods reach for the bluest sky, leaves the size of

dinner plates. At the end of the drive sits a small cabin, the home of our citizen allies. Annual clients of ours, the landowners appreciate the natural splendor in which they reside, and the beavers who routinely occupy the side channel cutting across their parcel. They just want to be able to access their cabin without needing a boat!

Restored by the Yakama Nation around a decade ago, the side channel was redesigned to prevent stranding of juvenile salmon in low floodplain wetlands as snow melt-fed water levels decrease during late spring and summer. The narrow channel has been very attractive to beavers over the years and after repeated relocation services provided by MBP, the landowners expressed interest in alternative solutions. We jumped at the opportunity to experimentally manage flooding and fish passage while beavers continued to occupy the site.

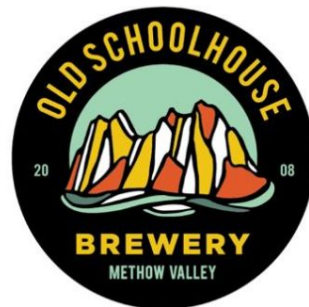


We proposed the installation of a “Multi-Intake Pond Leveling Device”; a modified flow device designed by our coexistence mentors at Beaver Solutions near Boston, MA. This simple yet nuanced device allows us to control water surface elevation in the narrow channel upstream of the dam while shielding the source of outflow from inquisitive beavers. With all partners on board, we successfully installed the pond leveler, lowering the channel surface elevation more than 8 inches, minimizing the threat of driveway flooding while continuing to provide deeper water refugia for juvenile salmon, beavers, and other wildlife. We will continue to monitor the efficacy of our coexistence device throughout the winter and next year’s high flows. Stay tuned for updates! Meanwhile, check out the wildlife attracted to this beaver-dammed side channel and improved wildlife habitat! Can you name them all?



P.S. - We would also like to take a moment to extend our sincerest gratitude to our funders/partners (Methow Salmon Recovery Foundation, WA Recreation and Conservation Office-Salmon Recovery Funding Board, WA Department of Ecology, USFWS, Bureau Of Reclamation, Defenders of Wildlife, Bonneville Education Foundation, East 20 Pizza, Methow Valley Builders) and our community, both local and afar, that donated to the Methow Beaver Project during our Give Methow Fundraiser last month. Thank you for caring, for your generosity, and for your continued support! And of course, thank you Beavers!

Happy Thanksgiving from the Methow Beaver Project!





methowbeaverproject.org



Copyright © Methow Beaver Project 2020, All rights reserved.

Our mailing address is:

methow.beaver@gmail.com

Want to change how you receive these emails?

You can [update your preferences](#) or [unsubscribe from this list](#).

This email was sent to <<Email Address>>

[why did I get this?](#) [unsubscribe from this list](#) [update subscription preferences](#)

nonprofit · P.O. 755 · Twisp, Wa 98856 · USA

